



FOUNDATIONS OF INTEGRATIVE ONCOLOGY

Module 2 The Complex Landscape of Cancer

Lesson 4 Patient Biological Terrain & the Tumor Microenvironment

Learning Objectives – Understand and describe:

- Primary Elements of the Tumor Microenvironment
- Primary Nuclear Genomic Proteomic and Intracellular Factors
- Primary Intracellular Factors and the Transcriptome
- Cell Membrane Dynamics
- Extracellular Factors
- Cellular Metabolic Factors
- Primary Epigenetic Influences on Oncogene and Tumor Suppressor Gene Expression
- Impact of Diet, Lifestyle and Behavior on Gene Expression and Immune Modulation

Characteristics of the Patient

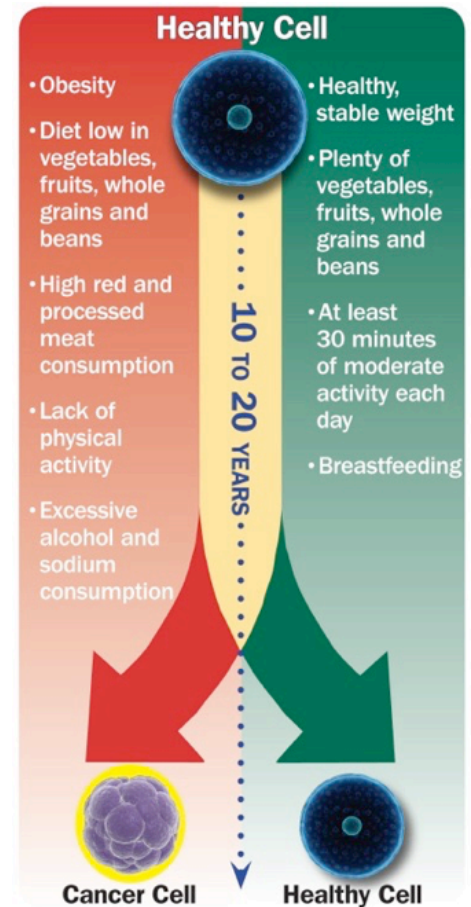
- Nuclear & Intracellular Factors
- Cell Membrane Dynamics
- Extracellular Factors

Epigenetics: something that affects a cell, organ or individual without affecting its DNA

Gene Products = Transcriptome

Lifestyle & Behavioral Factors impact gene expression and immune modulation.

- Stress, diet, behavior, lifestyle, sleep, exercise, toxins



References

- Anand, P., Kunnumakara, A. B., Sundaram, C., Harikumar, K. B., Tharakan, S. T., Lai, O. S., ... & Aggarwal, B. B. (2008). Cancer is a preventable disease that requires major lifestyle changes. *Pharmaceutical research*, 25(9), 2097-2116.
- Ballard-Barbash, R., Friedenreich, C. M., Courneya, K. S., Siddiqi, S. M., McTiernan, A., & Alfano, C. M. (2012). Physical activity, biomarkers, and disease outcomes in cancer survivors: a systematic review. *Journal of the National Cancer Institute*, 104(11), 815-840.
- Bigley, A. B., & Simpson, R. J. (2015). NK Cells and Exercise: Implications for Cancer Immunotherapy and Survivorship. *Discovery medicine*, 19(107), 433-445.
- Franzese, E., & Nigri, G. (2006). [Night work as a possible risk factor for breast cancer in nurses. Correlation between the onset of tumors and alterations in blood melatonin levels]. *Professioni infermieristiche*, 60(2), 89-93.
- Hernandez-Reif, M., Field, T., Ironson, G., Beutler, J., Vera, Y., Hurley, J., ... & Hernandez-Reif, M. (2005). Natural killer cells and lymphocytes increase in women with breast cancer following massage therapy. *International Journal of Neuroscience*, 115(4), 495-510.
- Sung, B., Prasad, S., Yadav, V. R., & Aggarwal, B. B. (2012). Cancer cell signaling pathways targeted by spice-derived nutraceuticals. *Nutrition and cancer*, 64(2), 173-197.
- Witek-Janusek, L., Albuquerque, K., Chroniak, K. R., Chroniak, C., Durazo-Arvizu, R., & Mathews, H. L. (2008). Effect of mindfulness based stress reduction on immune function, quality of life and coping in women newly diagnosed with early stage breast cancer. *Brain, behavior, and immunity*, 22(6), 969-981.